

WATER INFRASTRUCTURE

Smartcrete Pathway to Concrete
Research

25th March 2022

Prof. Marjorie Valix
School of Chemical and Biomolecular Engineering
Faculty of Engineering



THE UNIVERSITY OF
SYDNEY



Outline

Research

Facilities

Highlighted Industry Projects

Industry Partnerships

Community of Practice

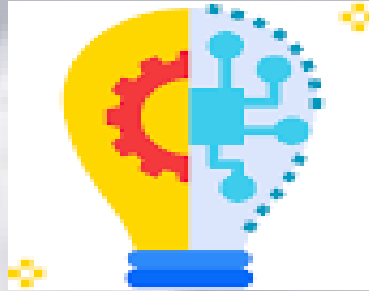
Water industries aim to provide affordable and reliable services and maintaining the trust of customers

Meet Customer Requirements

Sustainable infrastructure

Maximise life of assets

Challenges and Opportunities



Emerging Technologies

**Ageing
Assets,
hard to
access and
extensive**

**Rising
Cost**

**Climate
Change**

**Population
Growth**

**Investment
constraints**

Water-infrastructure Research@ USYD

Faculty of Engineering

Decision Tools

Material Performance and Failure Assessment

Condition Assessment

System Rehabilitation

Economic Modelling and Business Risk Assessment

Sustainability/Circular Economy

Sewer Rehabilitation & Prioritisation Decision Platform

This was developed by The University of Sydney and is designed to assist asset managers, project managers and liner installers by:

- Prioritising concrete assets for rehabilitation
- Selecting coating that will work in the sewer's environmental conditions based on sewer classification
- Determining required coating thickness for required service life for a given sewer classification



See <https://water360.com.au/projects/smart-linings/wastewater-liners/>

Failure Assessment

Utilising our knowledge of processing engineering, material science, and other basic sciences to understand the root **causes**, **mechanisms** and **consequences** of material failure.

MICC

Soil Corrosion

Chemical Corrosion

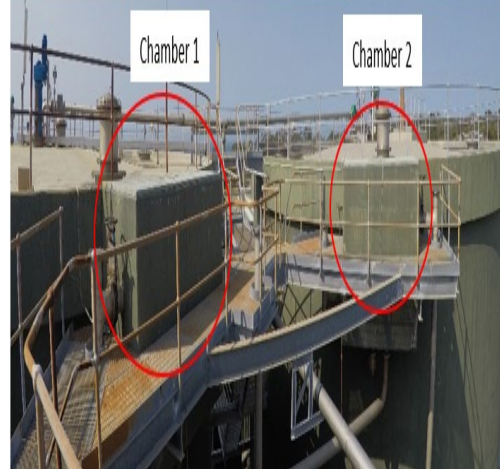
Pressure Transients

Tribocorrosion



Material Performance

We provide/support accelerated lab-scale to protocols for field testing in 'live' assets



Digital Asset Management Solutions (USYD EIE)



AI & IoT (AloT) Asset Management Platform

AWS/Alibaba/edge cloud supported AloT platform for asset management

AI, Machine Learning and Digital Twin Modelling

- Extensive AI and Machine learning expertise in various applications.
- Developed digital twin modelling for various applications

Network connectivity

Terrestrial 6G, satellite networks, 6G intelligent IoT connectivity and security, Industrial IoT, local and wide area networks

Wireless Sensing

Strong expertise in radio sensing/radar imaging, quantum sensing, wireless sensor networks/IoT

Smart Health AloT

- An AloT system based on LORAWAN and AWS cloud for personnel tracking, people counting, asset management, environment monitoring.



AI

On-edge: Local

Immediate detection
Mono/bi variable

On-cloud: remote

Delayed reaction
Multi-variables

System Rehabilitation

Coating Selection

Placement

Surface Preparation

Design of Protective System

Economic Analysis and
Business Risk Assessment

Regulatory Framework



Protective Coatings Manual



WSA 201:2020 Manual for Selection and Application of Protective Coatings Version 2.3

WSAA's manual for selection and application of protective coatings has been updated with the findings from the field trials and University of Sydney testing and includes new information on

Corrosion Classifications

CAC and Geopolymer system requirements

Surface Preparation

Repair Requirements

Application Requirements

Defects

Quality Assurance

Acceptance Testing

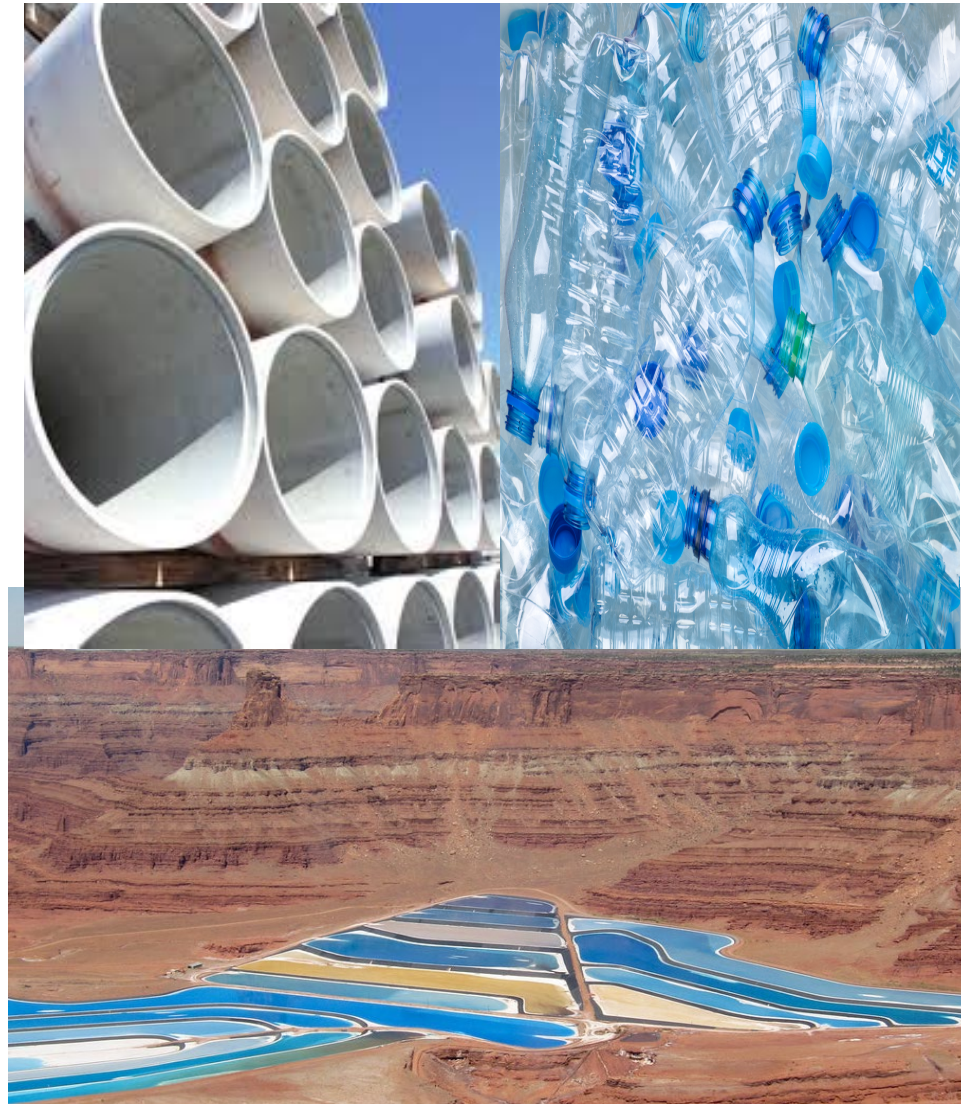
Sustainability/Circular Economy

Support the water industry through material selection to support decarbonisation

Developed **National and Utility Specific Product Specifications** e.g.:

- geopolymer and alkali activated cement mortars (WSA 161-2021 V1.0)
- Repurposed waste in specialty cement mortars (WSA 160-2021 V1.0)

Compliance testing e.g., geopolymer concrete for construction of composite sewer pipes (Interceptor project, Watercare)



Sydney Core Research Facilities

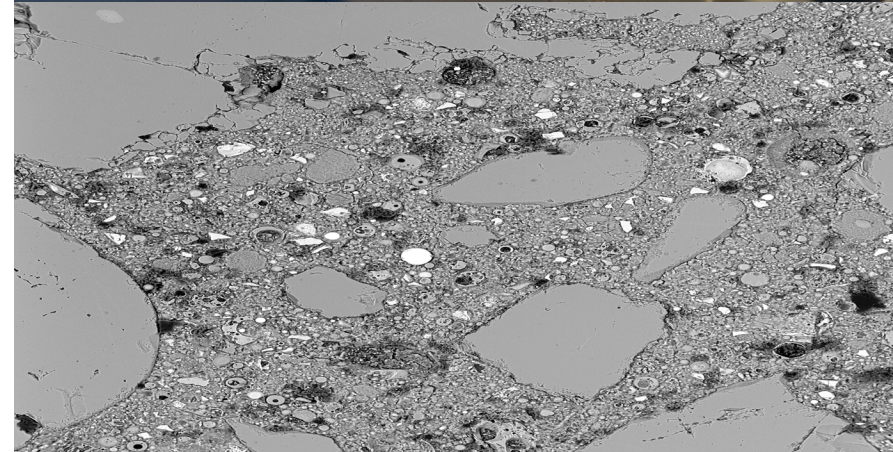
State-of-the-art instruments and technical expertise for sample characterisation permitting exploration of physical and biological structures at the macro, micro, nano and atomic scales

Sydney Analytical

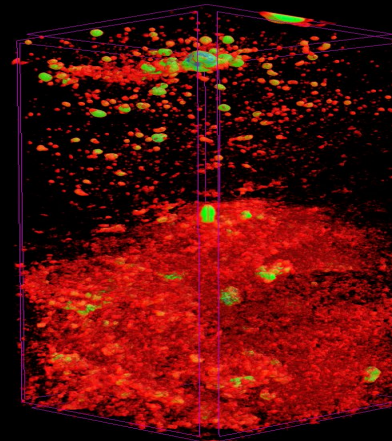
Sydney Microscopy & Microanalysis

Sydney Manufacturing Hub

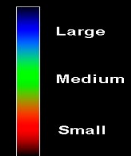
Sydney Mass Spectrometry



200 μm 300x 15kV -Map
41 889 μm BSD Full



Relative Pore/Void Size



Highlighted Projects (e.g.,)

CRC-P SMART LININGS FOR PIPE & INFRASTRUCTURE 2018-2022

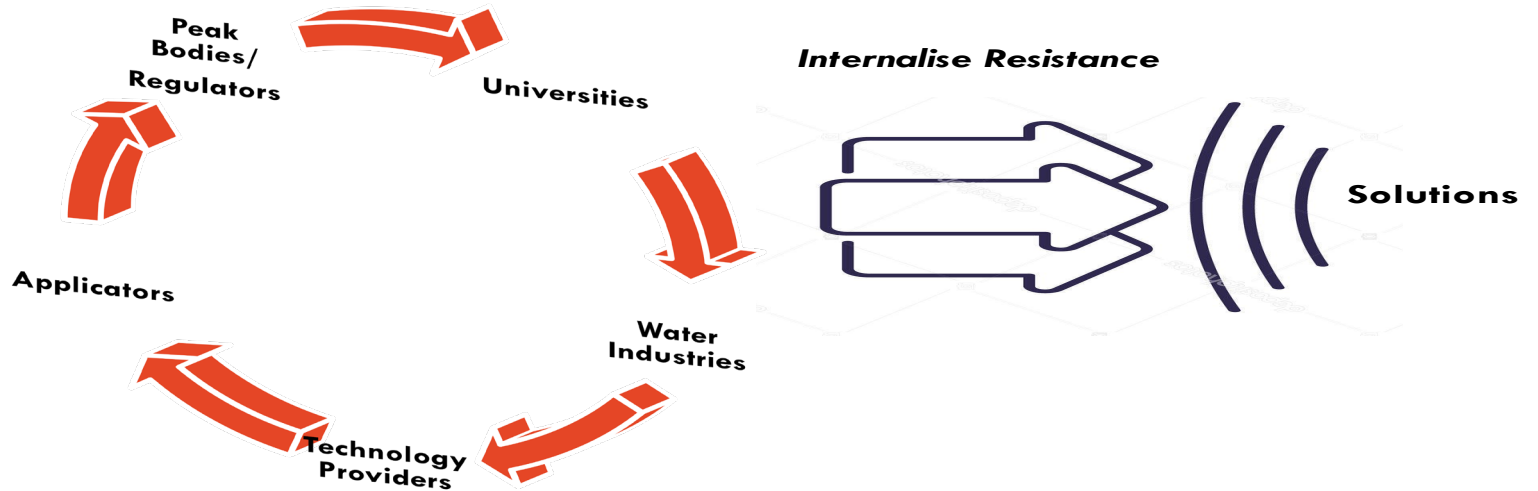
Delivered clarity on water asset rehabilitation needs, decision tools including sewer classification, failure predictive models, pipe prioritisation and mitigation selection/design, specifications and standards to meet water industry requirements to manage \$160B of assets

\$25M+ project with 35 industrial (utilities and manufacturers) partners including WaterRF, WERF and UKWIR.

See **Water360** website:
<https://water360.com.au/projects/smart-linings/>



Industry Partnerships



Community of Practice in Water Infrastructure Asset Management (Smartcrete)

